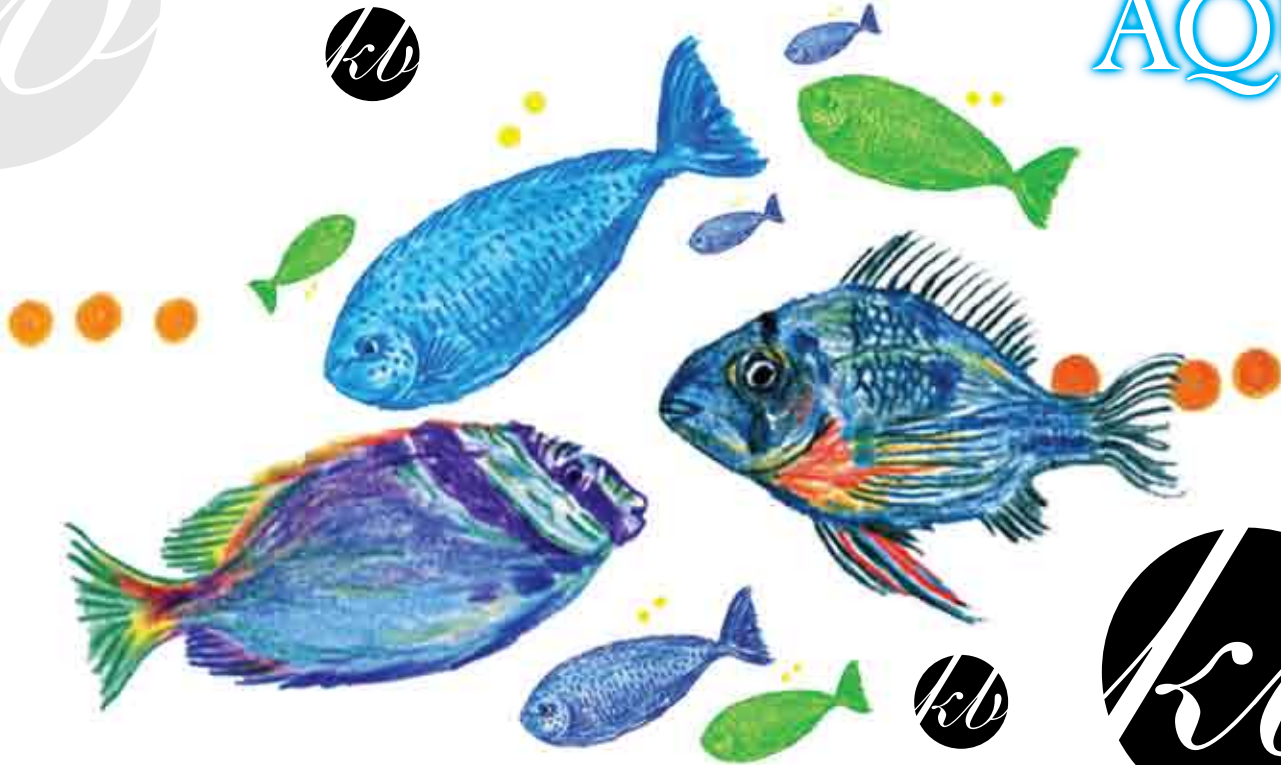




AQUA



### Aqua Body Care

A selection of luxurious body brushes in natural bristle and finest treated timber.

Designed to compliment the body shape, and clean, massage, stimulate and gently exfoliate the skin leaving it





**KENT.**

**AQUA**



**NB1**

Nail - satinwood, pure white  
bristle - row of bristle on back



**NB2**

Nail - beechwood, pure black  
bristle - row on back



**NB3**

Nail - beechwood, pure white  
bristle - row on back



**NB4**

Nail - beechwood,  
pure white, bristle





# KENT. AQUA



**NB6**  
Nail - extra large oval,  
pure white bristle




**SH1**  
Shampoo and scalp massage brush,  
Available in orange, blue, yellow or lime



**ART8**  
Nail - pure white bristle, row  
of bristle on back, also available in  
green and blue



**FD11**  
A compact beechwood shower/exfoliating  
brush, pure bristle, rope strap



**KENT.**  
AQUA



FD6

Beechwood shower bat,  
pure white bristle

FD5

Beechwood bath bat,  
pure white bristle, fixed head

FD10

Beechwood bath brush,  
pure white bristle, fixed head

FD3

Beechwood bath brush,  
pure white bristle, detachable head with grip